

This report will be made public
on 7 January 2022

Hythe Town Council

www.hythe-tc.gov.uk

Report number F&GP/22/21

To Hythe Town Council
Date 5 January 2022
Status **Non Exempt**
Responsible officer Town Clerk and Responsible Financial Officer
Subject **PHOTOCOPIER CONTRACT REPORT F&GP/22/21**

SUMMARY: This report provides an update of the Town Council's contract with the current contractor and recommends the Committee review in accordance with good practice.

REASON FOR RECOMMENDATION:

The Committee is asked to agree the recommendations set out below because:-

- a) The Council is committed to control and manage its financial affairs in accordance with the Accounts and Audit Regulations 2015.

RECOMMENDATIONS

1. To receive and note the report F&GP/22/21
2. To recommend Contractor A or B for the next contract.

INTRODUCTION

The current photocopier, a Konica Minolta Bizhub C308, was provided for use in the council offices in 2017. The contract was renewed in 2019 with a discount as it was decided to keep the machine that was already provided rather than upgrade.

Current Rental costs £416.02 per quarter,
Average Mono Volume: charged at 0.563 pence
Average Colour Volume; charged at £5.594 pence
Current Contract: 3 years due for renewal June 2022.
Includes 3-year papercut support and updates £26 per quarter.
Paper cut is full print management software that is designed for multi-office, multi-machine and multi-user applications and is already in use with the current contract.

In December 2021, officers received notification that the supplier of ink for the Konica Minolta had received extreme fire damage to their building, which in turn has caused a shortage of supply of ink in the UK for the photocopier in situ. This poses a risk to the council that paperwork will not be able to be produced as ink for this particular printer is now proving difficult to obtain.

The Council's current provider, Contractor A, has offered an exchange to an advanced DX Canon DX 3826i device (specification attached) as an upgrade and

replacement, so that there will be no discontinuation to the service provided. This will be a new contract which will start immediately.
The Canon has all the same features required as on current device as follows:

A3/A4/A5 -Copy, print and scanning with duplex for 2 sided

4 X Online universal paper trays and internal (space saving staple finisher) – instead of larger unit on the side

Multi sheet document feeder and colour touch screen user friendly panel with user codes

Similar print speed but has faster processing speed of documents although this is still slightly dependent on network as with current device

New Rental costs £377.00 per quarter,
Average Mono Volume: charged at 0.003 pence
Average Colour Volume; charged at £0.025 pence
Rental Term **39 months**. Contract will end April 2025.
3-year papercut support and updates £26 per quarter.

The current provider have confirmed they would credit the difference of the remaining value of the current contract due to end in June 2022, £1,900 if council choose to continue business.

Contractor **B**, have also contacted the council with a proposal of an offer of a Brand New Ricoh IMC 3000 (specification attached).

The Ricoh device quoted also comes with its own version of papercut. It has Secure print, the ability to send a private print job to the device which can only be output once a code has been input. PIN codes, you can give each member of staff their own PIN code and the machine will not work until this is input, you can ask the machine for a report which then will tell you which PIN/user has done what amount of printing/copying and if colour or black and white.

New Rental costs £337.00 per quarter,
Average Mono Volume: charged at 0.0028 pence
Average Colour Volume; charged at £0.025 pence
Rental Term **60 months**. Contract will end January 2027.
Does not Includes 3-year papercut support

The new provider has also confirmed they would credit the difference of the remaining value of the contract, £1,900 to obtain the new business.

Summary

Both organisations are keen to provide equipment and service to the council. The committee are asked to decide which device and supplier is most suitable for the needs of the council.

RISK MANAGEMENT

A summary of the perceived risk follows;

Perceived Risk	Seriousness	Likelihood	Preventative Action
The Council does not update its photocopying and printing facilities and no paperwork can be distributed.	High	High	The Council renews its contract with the current provider or instructs a new provider to take over the contract.

CONTACT OFFICER

If you have any queries about this report please contact The Town Clerk and Responsible Financial Officer of the Council

Tel: 01303 266152 or email Clerk@hythe-tc.gov.uk prior to the meeting

A3 Colour Intelligent Devices

RICOH

IM C3000(A)

IM C3500(A)

✓ Printer ✓ Copier ✓ Scanner ✓ Fax

RICOH
imagine. change.



Welcome to a new era of technology that keeps your workplace up-to-date, now and in the future. Smarter working made simple thanks to the IM C3000(A)/C3500(A).

Now is the time to:

- Protect your devices with easy access to security updates
- Take advantage of easy productivity upgrades at your own pace
- Save costs by bringing high-standard quality print output in-house
- Maximise productivity with streamlined workflows

Today's workplace needs to be ready for tomorrow. Ricoh's intelligent devices provide smooth access to functionality upgrades and productivity enhancements when they are released, without needing to change your hardware. Turn your device into a powerful hub that helps you manage information workflows efficiently, using technology that's scalable, secure, sustainable and simple.

RICOH IM C3000A/IM C3000/IM C3500A/IM C3500

MAIN SPECIFICATIONS

	IM C3000A	IM C3000	IM C3500A	IM C3500
GENERAL				
Warm-up time		21 seconds		
First output speed: B/W		4.5 seconds		
First output speed: full colour		6.9 seconds		
Continuous output speed	30 ppm	30 ppm	35 ppm	35 ppm
Memory: standard		2 GB		
Memory: maximum		4 GB		
HDD: standard		320 GB		
HDD: maximum		320 GB		
ARDF capacity		100 sheets		
SPDF capacity		220 sheets		
Weight	99.4 kg	94 kg	99.4 kg	94 kg
Dimensions: W x D x H	587 x 685 x 963 mm	587 x 685 x 913 mm	587 x 685 x 963 mm	587 x 685 x 913 mm
Power source		220 - 240 V, 50/60 Hz		
COPIER				
Multiple copying	Up to 999 copies			
Resolution	600 dpi			
Zoom	From 25% to 400% in 1% steps			
PRINTER				
CPU	ApolloLake E3930 1.3 GHz			
Printer language: standard	PCL5c, PCL6, PostScript 3 (emulation), PDF direct (emulation)			
Printer language: option	Genuine Adobe®PostScript®3™, PictBridge, PDF Direct from Adobe®			
Print resolution: maximum	1,200 x 1,200 dpi			
Network interface: standard	Ethernet 10 base-T/100 base-TX/1000 base-T, USB Host I/F Type A, USB Device I/F Type B			
Network interface: option	Bi-directional IEEE 1284/ECP, Wireless LAN (IEEE 802.11a/b/g/n), Additional NIC (2nd port)			
Mobile printing capability	Apple AirPrint™, Mopria, Google Cloud Print, NFC, Ricoh Smart Device Connector			
Windows® environments	Windows® 7, Windows® 8.1, Windows® 10, Windows® Server 2008, Windows® Server 2008R2, Windows® Server 2012R2, Windows® Server 2016			
Mac OS environments	Macintosh OS X Native v10.11 or later			
UNIX environments	UNIX Sun® Solaris, HP-UX, SCO OpenServer, RedHat® Linux Enterprise, IBM® AIX			
SAP® environments	SAP® R/3®, SAP® S/4®			
Other supported environments	IBM iSeries			
SCANNER				
Scanning speed: ARDF	80 ipm (200/300 dpi)			
Scanning speed: SPDF	120 ipm (simplex)/240 ipm (duplex)			
Resolution: maximum	1,200 dpi			
Compression method	TIFF (MH, MR, MMR, JBIG2), Grayscale			
File formats	Single Page TIFF, Single page JPEG, Single page High compression PDF, Single page PDF/A, Multi page TIFF, Multi page PDF, Multi page High compression PDF, Multi page PDF/A			
Scan modes	E-mail, Folder, USB, SD Card			
FAX				
Circuit	PSTN, PBX			
Transmission speed	2 seconds			
Modem speed: maximum	33.6 Kbps			
Resolution: standard	8x3.85 line/mm, 200x100 dpi			
Resolution: option	16x15.4 line/mm, 400x400 dpi			
Compression method	MH, MR, MMR, JBIG			
Scanning speed	81 spm	68 spm	81 spm	68 spm
Memory: standard	4 MB, (320 pages)			
Memory: maximum	60 MB, (4,800 pages)			
PAPER HANDLING				
Recommended paper size	Standard paper tray(s):SRA3, A3, A4, A5, A6, B4, B5, B6, Envelopes Optional paper tray(s):SRA3, A3, A4, A5, A6, B4, B5, B6, Envelopes Bypass tray:SRA3, A3, A4, A5, A6, B4, B5, B6, Envelopes, Custom Size paper			
Paper input: standard	1,200 sheets			
Paper input: maximum	4,700 sheets			
Paper output: standard	500 sheets			
Paper output: maximum	1,625 sheets			
Paper weight	Trays: (60 - 300 g/m²), Bypass: (52 - 300 g/m²), Duplex: (52 - 256 g/m²)			
Paper types	Plain paper, Recycle paper, Special paper, Color paper, Letterhead, Cardstock, Preprinted paper, Bond paper, Coated paper, Envelope, Gloss paper, Label paper, OHP			
ECOLOGY				
Power consumption: max.	Less than 1,700 W			
Power consumption operation: B/W	503.3 W	503.3 W	532.9 W	532.9 W
Power consumption operation: Full colour	559.7 W	559.7 W	598.6 W	598.6 W
Power consumption: ready	47.6 W			
Power consumption: sleep	0.55 W			
TEC	1.1 kWh	1.1 kWh	1.3 kWh	1.3 kWh



imageRUNNER ADVANCE DX C3800 Series

CONNECT SECURELY, TRANSFORM DIGITALLY

OPTIMUM PERFORMANCE AND UNRIVALLED USER EXPERIENCE FROM INNOVATIVE TECHNOLOGIES

The future of business is digital. Canon imageRUNNER ADVANCE DX is a new generation of smart multifunction devices, designed to support and accelerate every step of your digital transformation. Built with Canon's imageRUNNER ADVANCE DNA, state-of-the-art technology and software work hand-in-hand to digitise, automate and optimise content-centric workflows. As always, we're continually evolving our technology to ensure you feel safe and confident when using Canon devices.

Canon's imageRUNNER ADVANCE DX C3800 Series offers enhanced security and effortless serviceability, with smart document workflows and vibrant image quality. Ideal for small to medium-sized offices and large companies looking for a versatile and efficient MFP device, these quiet and sustainable devices seamlessly integrate into hybrid workspaces. uniFLOW Online Express comes as standard, delivering centralised device management and secure collaboration in the cloud.



**CLOUD
CONNECTIVITY**



SECURITY



PRODUCTIVITY



SUSTAINABILITY



SERVICEABILITY

Canon

imageRUNNER ADVANCE DX C3800 Series

CLOUD CONNECTIVITY

- Cloud-based software-as-a-standard uniFLOW Online Express (uFOE) offers a single integrated solution to increase device security and simplify print management
- Securely scan and print documents from anywhere, with enhanced cloud connectivity
- Re-usable print formats allow easy access to documents in the cloud
- Canon's MEAP platform optimises processes by integrating with document capture and output management solutions such as uniFLOW Online
- Device offers native applications such as AirPrint, Mopria, Universal Print by Microsoft and Canon PRINT Business app

SECURITY

- Verify System at start up, SIEM support and McAfee Embedded Control analyse the device in real-time to detect and prevent external attacks
- TPM 2.0 (Trusted Platform Module) comes as standard and securely stores encryption keys, such as passwords
- Set up device authentication, two-factor authentication and device function restrictions for both device and cloud-based security measures
- Encrypted SSD storage extends data protection and is more resistant to vibration and shock for increased reliability
- Upgrade to uniFLOW Online* for enhanced secure printing, mobile printing, and guest printing from any device

*uniFLOW Online is available as a Device Based Cloud Subscription for Document Output and Capture Management. Based on business needs, users can upgrade to uniFLOW Online to unlock a range of advanced benefits, including: Increased security with user authentication methods. Personalised workflows to enhance productivity. Reduced wastage by releasing jobs at the device. An intuitive cloud dashboard to leverage real-time data. Greater control over access and usage to reduce print costs.

**It is recommended that the film is applied by a Service engineer.

NOTE - Certain features are only enabled with the combination of imageRUNNER ADVANCE DX and uniFLOW Online

PRODUCTIVITY

- Print and scan up to 35 ppm and 270 ipm
- Automatically file documents with cloud-based Filing Assist from uniFLOW Online*
- Alleviate concerns for physical device operation, without compromising user experience, by applying** optional antimicrobial film to all common touch points
- Efficiently digitise documents with one-touch workflows and shortcut buttons on the Home screen
- Enable flexible hybrid working and minimise device interaction with continuous user experience through the Canon PRINT Business app
- Boost productivity with stapling of up to 50 sheets with the optional Instant Stapler accessory - small enough to fit on top of devices or desks, anywhere in the office, home or co-working space

SUSTAINABILITY

- Reduced operation noise from soundproofing of the MFP exterior ensures quiet operation and prevents distraction in co-working spaces
- Eco Recovery mode decreases power consumption to save energy and lower running costs
- High-quality error-free scanning, including digital de-skewing and advanced stain resistant glass cuts down wastage
- Eco stapling reduces staple costs and contributes to environmentally friendly document production and management

SERVICEABILITY

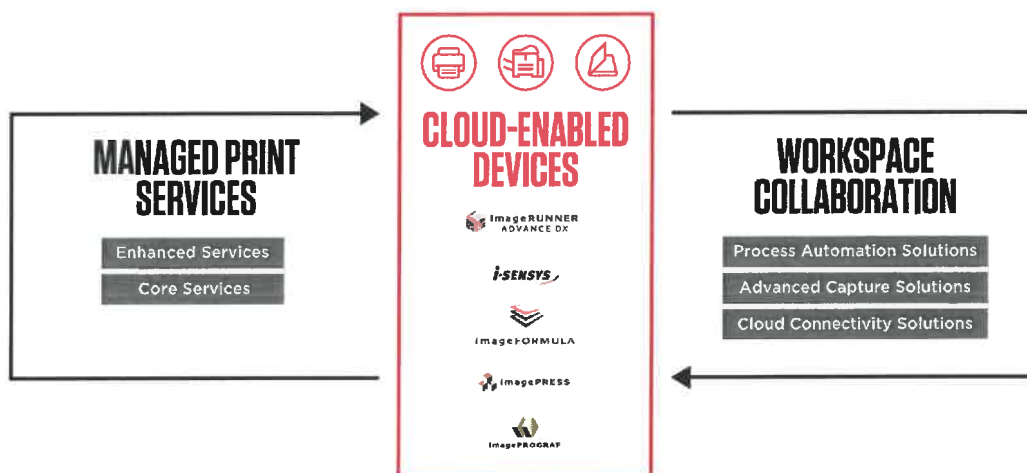
- Save costs and increase device uptime with innovative enhancements to frequently replaced hardware components as part of our evolving imageRUNNER ADVANCE DX portfolio
- Consumable life prediction allows parts to be replaced systematically to reduce service costs
- Users can easily replace consumable parts quickly, accurately and safely to reduce technician visits

QUICK FACTS

- Format:** Colour A3
- Paper Supply Capacity (Max):** 2,300 sheets
- Warm-up time:** 4 seconds or less (Quick Startup Mode)
- Finishing Capabilities:** Collate, Group, Offset, Staple, Saddle Stitch, Hole Punch, Eco Staple, Staple On Demand
- Supported File Types:** PDF, EPS, TIFF/JPEG, and XPS
- Print speed:** 22 - 35 ppm
- Scan Speed:** 270 ipm (A4)
- Print Languages:** UFR II, PCL6, Adobe® PostScript®3™
- Print Resolution:** 1,200 x1,200

- High productivity is enabled with best-in-class print speeds and innovative scan technology including a new 35 ppm print speed.
- Cloud software uniFLOW Online Express helps maintain continuous productivity across hybrid working.
- Work safely and conveniently in hybrid environments with device features such as personalised user timelines and protective antimicrobial film (optional), as well as mobile printing and scanning from applications like Canon PRINT Business app.
- McAfee Embedded Control, TPM 2.0 and SIEM support protect document, network and device.
- Enhanced finishing capabilities and more paper type support improves production quality.
- Easy maintenance and serviceability ensures device reliability and maximises uptime.
- Efficiently digitise documents with automated workflows connected to applications such as OneDrive, SharePoint, Concur, DropBox and Microsoft Teams (requires uniFLOW Online*).
- Reduce environmental impact and workplace disruption with quieter printing and scanning.

TAILORED SOLUTIONS TO MEET EVERY CHALLENGE



Canon's Digital Transformation Services (DTS), bring together our leading hardware and software into an integrated technology ecosystem, designed to support your transformation journey. This offering combines Managed Print Services and Workspace Collaboration solutions, to help you gain transparency and control over the entire document lifecycle.

Canon

Canon Ireland
3006 Lake Drive
Citywest, Saggart
Co. Dublin, Ireland
Telephone No: 01 2052400
Facsimile No: 01 2052525
canon.ie

Canon (UK) Ltd
5 The Square
Stockley Park
Uxbridge
UB11 1ET
Tel: 01895 648 000
www.canon.co.uk

Canon Inc.
canon.com
Canon Europe
canon-europe.com
English edition
© Canon Europa N.V., 2021

imageRUNNER ADVANCE DX C3800 Series

SMART COLOUR A3 MULTIFUNCTION DEVICES FOR EFFICIENT, HIGH-QUALITY DOCUMENT PROCESSING



Canon UNIFLOW Online
Outstanding Cloud Output Management Solution

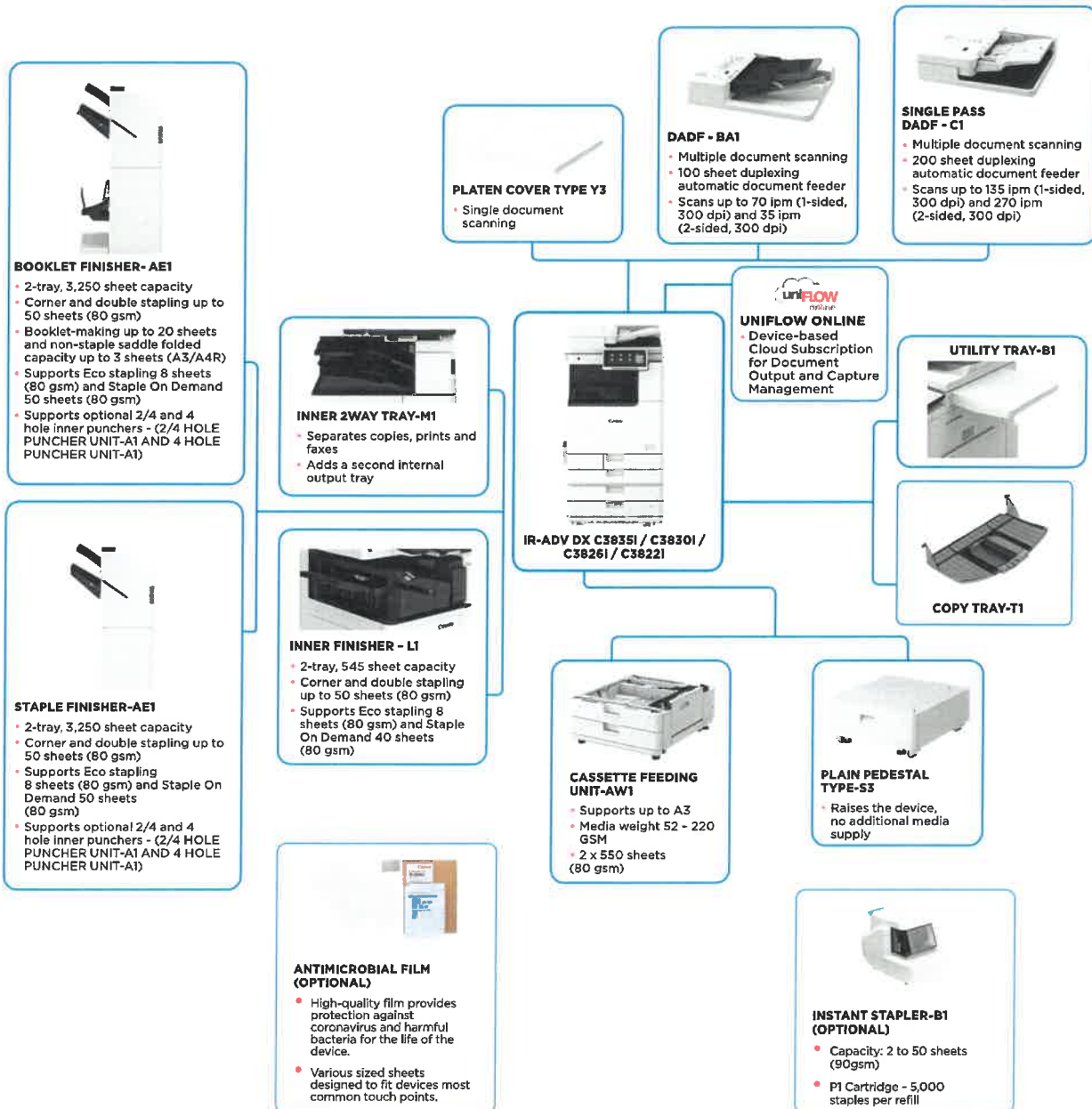


Canon UNIFLOW Online
Outstanding Cloud Output Management Solution



New to the Line

MAIN CONFIGURATION OPTIONS



This flat configuration is for illustration purpose only. For a complete list of options and the exact compatibility relationships, please refer to the online [product configurator](#).

The Unified Firmware Platform (UFP) ensures that the latest feature upgrades and protection are available, for an enhanced user experience across the entire IR ADVANCE DX portfolio.

Canon

TECHNICAL SPECIFICATIONS

imageRUNNER ADVANCE DX C3800 Series

MAIN UNIT		Print Resolution (dpi)	1,200 ×600, 1,200 ×1,200 (half-speed)
Machine type	A3 Color Laser Multifunctional	Page description languages	Standard: UFRII, PCL6, Adobe® PostScript®3™
Core functions	Print, Copy, Scan, Send, Store and Optional Fax	Direct Print (RUI)	Supported file types: PDF, EPS, TIFF/JPEG, and XPS
Processor	1.8GHz Dual Core Processor	Printing from mobile and cloud applications	AirPrint, Mopria, Universal Print by Microsoft, Canon PRINT Business app, and uniFLOW Online (optional) A range of software and MEAP-based solutions are available to provide printing from mobile devices or internet-connected devices and cloud-based services depending on your requirements. Please contact your sales representative for further information
Control Panel	10.1" TFT LCD WSVGA Color Touch panel		Android/Windows® 10/Chrome OS/macOS (11.2.2) /iOS/iPadOS As of Mar. 2021
Memory	Standard: RAM 3.5GB Main CPU Side: 2GB Image Processing CPU Side: 1GB + 0.5GB (reserved for image processing)	OS Standard Printing	PS fonts: 136 Roman PCL fonts: 93 Roman, 10 Bitmap fonts, 2 OCR fonts, Andale Mono WT J/K/S/T™ (Japanese, Korean, Simplified and Traditional Chinese) , Barcode fonts*2
Storage	Standard: (SSD) 256 GB Optional: (SSD) 1TB	Fonts	*1 Optional PCL International Font Set-A1 is required. *2 Optional Barcode Printing Kit-D1 is required.
Interface Connection	NETWORK Standard: 1000Base-T/100Base-TX/10Base-T, Wireless LAN (IEEE 802.11 b/g/n) Optional: NFC, Bluetooth Low Energy OTHERS Standard: USB 2.0 (Host) x1, USB 3.0 (Host) x1, USB 2.0 (Device) x1; Optional: Serial interface, Copy Control Interface	Print Features	Secured Print, Secure Watermark, Header/Footer, Page Layout, Two-sided Printing, Mixed Paper Sizes/ Orientations, Front/Back Covers, Toner Reduction, Poster Printing, Forced Hold Printing, Print Date, Scheduled Printing, Printing Using a Virtual Printer
Paper Supply Capacity (A4, 80gsm)	Standard: 1,200 sheets 100-sheet Multi-purpose tray 550-sheet Paper cassette x 2 Maximum: 2,300 sheets (with Cassette Feeding Unit-AW1)	Operating System	UFRII: Windows® 8.1/10/Server2012/Server2012 R2/ Server2016/Server2019, Mac OS X(10.11 or later) PCL: Windows® 8.1/10/Server2012/Server2012 R2/ Server2016/Server2019 PS: Windows® 8.1/10/Server2012/Server2012 R2/ Server2016/Server2019, Mac OS X(10.11 or later) PPD: Windows® 8.1/10, Mac OS X(10.11 or later) As of Mar. 2021
Paper output capacity (A4, 80gsm)	Standard: 250 sheets Maximum: 3,450 sheets (with Staple Finisher-AE1 or Booklet Finisher-AE1 and Copy Tray-T1)	COPY SPECIFICATIONS	
Finishing capabilities	Collate, Group, Offset, Staple, Saddle Stitch, Hole Punch, Eco Staple, Staple On Demand * Finishing capabilities vary depending on the options connected.	Copy Speed (BW and CL)	IR-ADV DX C3835i: 1-sided: Up to 35 ppm (A4, A5, A5R, A6R), Up to 17 ppm (A3), Up to 23 ppm (A4R) IR-ADV DX C3830i: 1-sided: Up to 30 ppm (A4, A5, A5R, A6R), Up to 15 ppm (A3), Up to 20 ppm (A4R) IR-ADV DX C3826i: 1-sided: Up to 26 ppm (A4, A5, A5R, A6R) , Up to 15 ppm (A3), Up to 20 ppm (A4R) IR-ADV DX C3822i: 1-sided: Up to 22 ppm (A4, A5, A5R, A6R) , Up to 15 ppm (A3), Up to 20 ppm (A4R)
Supported media types	Multi-purpose tray: Thin, Plain, Heavy*, Recycled, Coated*, Color, Tracing, Bond, Transparency, Label, Pre-punched, Letterhead, Envelope * SRA3 is unsupported for Coated (257-300gsm) and Heavy (257-300gsm) paper. Upper Cassette: Thin, Plain, Heavy, Recycled, Color, Bond, Transparency, Pre-punched, Letterhead, Envelope Lower Cassette: Thin, Plain, Heavy, Recycled, Color, Bond, Transparency, Pre-punched, Letterhead, Envelope* * Envelope Feeder Attachment A (standard) is required.	First-Copy-Out Time (A4, BW/ CL)	IR-ADV DX C3835i: Approx. 5.5/7.4 seconds or less IR-ADV DX C3830i/C3826i/C3822i: Approx. 6.1/8.4 seconds or less
Supported media sizes	Multi-purpose tray: Standard size: SRA3, A3, A4, A4R, A5, A5R, A6R, B4, B5, B5R Custom size: 98.4 x 139.7 mm to 320.0 x 457.2 mm Free size: 100.0 x 148.0 mm to 304.8 x 457.2 mm Envelopes: COM10 No.10, Monarch, ISO-C5, DL Envelope custom size: 98.0 x 98.0 mm to 320.0 x 457.2 mm Upper Cassette: Standard size: A4, A5, A5R, A6R, B5 Custom Size: 105.0 x 148.0 mm to 297.0 x 215.9 mm Envelopes: ISO-C5 Lower Cassette: Standard size: A3, A4, A4R, A5, A5R, A6R, B4, B5, B5R Custom Size: 105.0 x 148.0 mm to 304.8 x 457.2 mm Envelopes*: COM10 No.10, Monarch, DL * Envelope Attachment A (standard) is required.	Copy resolution (dpi)	600 x 600
Supported media weights	Multi-purpose tray: 52 to 300 gsm* * SRA3 is unsupported for Coated (257-300gsm) and Heavy (257-300gsm) paper. Upper/Lower Cassette: 52 to 256 gsm Duplex: 52 to 220 gsm	Multiple Copies	Up to 999 copies
Warm-up Time	Quick Startup Mode: 4 seconds or less* * Time from device power-on to when the copy icon appears and is enabled to operate on the touch panel display. From Sleep Mode: 10 seconds or Less From Power On: 10 seconds or less* * Time from device power-on, until copy ready (not print reservation)	Copy Density	Automatic or Manual (9 Levels)
Dimensions (W x D x H)	With Platen Cover-Y3: 565 x 692 x 788 mm With Single Pass DADF-C1: 565 x 722 x 897 mm With DADF-BA1: 565 x 719 x 891 mm	Magnification	Variable zoom: 25% to 400% (1% increments) Preset reduction/enlargement: 25%, 50%, 70%, 100%(1:1), 141%, 200%, 400%
Installation Space (W x D)	Basic: 978 x 1,119 mm (with Single Pass DADF-C1 + right cover open + Multi-purpose tray extension extended + paper cassette open) 978 x 1,116 mm (with DADF-BA1 + right cover open + Multi-purpose tray extension extended + Paper cassette open) Fully Configured: 1,651 x 1,119 mm (with Single Pass DADF-C1 + Staple Finisher-AE1/Booklet Finisher-AE1 + Copy Tray-T1 extension extended + paper cassette open) 1,651 x 1,116 mm (with DADF-BA1 + Staple Finisher-AE1/ Booklet Finisher-AE1 + Copy Tray-T1 extension extended + paper cassette open)	Copy Features	Preset R/E Ratios by Area, Two-Sided, Density Adjustment, Original Type Selection, Interrupt Mode, Book to Two Pages, Two-sided Original, Job Build, N on 1, Add Cover, Insert Sheets, Different Size Originals, Page Numbering, Copy Set Numbering, Sharpness, Erase Frame, Secure Watermark, Print Date, Gutter, Print & Check, Negative/Positive, Repeat Images, Merge Job Blocks, Mirror Image, Store in Mail Box, Copy ID Card, Skip Blank Pages, Free Size Original, Color Mode, Reserved copy, Copy Sample
Weight*	With Platen Cover-Y3: Approx. 71 kg With DADF-BA1: Approx. 78 kg With Single Pass DADF-C1: Approx. 84 kg	SCAN SPECIFICATIONS	
PRINT SPECIFICATIONS		Type	Standard: Color Platen Optional: Platen Cover-Y3, Single Pass DADF-C1* or DADF-BA1 (2-sided to 2-sided (Automatic with DADF)) * Detect Feeder Multi Sheet Feed is supported. DADF: Duplexing Automatic Document Feeder
Print Speed (BW and CL)	IR-ADV DX C3835i: 1-sided: Up to 35 ppm (A4, A5, A5R, A6R), Up to 17 ppm (A3), Up to 23 ppm (A4R) IR-ADV DX C3830i: 1-sided: Up to 30 ppm (A4, A5, A5R, A6R), Up to 15 ppm (A3), Up to 20 ppm (A4R) IR-ADV DX C3826i: 1-sided: Up to 26 ppm (A4, A5, A5R, A6R) , Up to 15 ppm (A3), Up to 20 ppm (A4R) IR-ADV DX C3822i: 1-sided: Up to 22 ppm (A4, A5, A5R, A6R) , Up to 15 ppm (A3), Up to 20 ppm (A4R)	Document Feeder Paper Capacity (80 gsm)	Single Pass DADF-C1: up to 200 Sheets DADF-BA1: up to 100 Sheets
		Acceptable Originals and weights	Platen: Sheet, Book, and 3-Dimensional Objects Document Feeder media weight: Single Pass DADF-C1: 1-sided scanning: 38 to 220 gsm (BW, CL) 2-sided scanning: 38 to 220 gsm (BW, CL) *An acceptable weights of A6R or smaller is 50 to 220gsm. DADF-BA1: 1-sided scanning: 38 to 128 gsm (BW), 64 to 128 gsm (CL) 2-sided scanning: 50 to 128 gsm (BW), 64 to 128 gsm (CL)
		Supported media sizes	Platen: max. scanning size: 297.0 x 431.8 mm Single Pass DADF-C1: A3, A4, A4R, A5, A5R, A6R, B4, B5, B5R, B6R, Custom size: 69.9 x 139.7 mm to 304.8 x 431.8 mm DADF-BA1: A3, A4, A4R, A5, A5R, B4, B5, B5R, B6, Custom size: 139.7 x 128 mm to 297.0 x 431.8 mm
		Scan Speed (ipm: BW/CL,A4)	Single Pass DADF-C1: 1-sided Scanning: 135/135 (300 x 300 dpi, send), 80/80 (600 x 600 dpi, copy) 2-sided Scanning: 270/270 (300 x 300 dpi, send), 160/90 (600 x 600 dpi, copy) DADF-BA1: 1-sided Scanning: 70/70 (300 x 300 dpi, send), 51/51 (600 x 600 dpi, copy) 2-sided Scanning: 35/35 (300 x 300 dpi, send), 25.5/25.5 (600 x 600 dpi, copy)

TECHNICAL SPECIFICATIONS

imageRUNNER ADVANCE DX C3800 Series

Scan Resolution (dpi)	Scan for Copy: 600 x 600 Scan for Send: (Push) 600 x 600 (SMB/FTP/WebDAV/IFAX), (Pull) 600 x 600 Scan for Fax: 600 x 600	Document Security	Print Security (Secure Print, Encrypted Secure Print, Forced Hold Printing, uniFLOW Secure Print*), Receive Data Security (Confidential Fax Inbox Forwarding Received Documents Automatically), Scan Security (Encrypted PDF, Device Signature PDF/XPS, User Signature PDF/XPS, Adobe LiveCycle* Rights Management ES2.5 Integration), BOX Security (Mail Box Password Protected, Advanced Space Access Control), Send Data Security (Setting for requesting password input per transmission, Restricted E-mail/File send functions, Confirming FAX number, Allow/Restrict Fax Driver Transmissions, Allow/Restrict Sending from History, S/MIME Support), Document Tracking (Secure Watermark) * Requires uniFLOW Online/uniFLOW
Pull Scan Specifications	Color Network ScanGear2. For both TWAIN and WIA Supported OS: Windows* 8.1/10/Server2012/Server2016 As of Mar. 2020	Network Security	TLS 1.3, IPsec, IEEE802.1X authentication, SNMP V3.0, Firewall Functionality (IP/MAC Address Filtering), Dual Network Support (Wired LAN/Wireless LAN, Wired LAN/Wired LAN), Disabling Unused Functions (Enabling/Disabling Protocols/Applications, Enabling/Disabling Remote UI, Enabling/Disabling USB Interface), Communication Line Separation (G3 FAX, USB Port, Advanced Space, Scan and Send-Virus Concerns for E-mail Reception)
Scan Method	Push Scan, Pull Scan, Scan to Box, Scan to Advanced Space, Scan to Network, Scan to USB Memory Key, Scan to Mobile device, Scan to cloud (uniFLOW Online - optional)	Device Security	Protecting SSD Data [SSD Data Encryption (FIPS140-2 Validated), SSD Lock], Standard SSD Initialize, Trusted Platform Module (TPM 2.0), Job Log Conceal Function, Protecting MFP Software Integrity, Checking MFD Software Integrity (Verify System at Startup, Runtime Intrusion Detection enabled with McAfee Embedded Control), HCD-PP Common Criteria Certification (pending confirmation)
SEND SPECIFICATIONS		Device Management and Auditing	Administrator Password, Digital Certificate And Key Management, Audit Log, Cooperating with External Security Audit System (Security Information and Event Management), Image Data Logging, Security Policy Setting
Destination	Standard: E-mail/Internet FAX (SMTP), SMB3.0, FTP, WebDAV, Mail Box Optional: Super G3 FAX, IP Fax	ENVIRONMENTAL SPECIFICATIONS	
Address Book	LDAP (2,000)/Local (1,600)/Speed dial (200)	Operating Environment	Temperature: 10 to 30 °C Humidity: 20 to 80 % RH (Relative Humidity)
Send resolution (dpi)	Push: up to 600 x 600 Pull: up to 600 x 600	Power source	220-240V 50/60Hz 5A
Communication protocol	File: FTP (TCP/IP), SMB3.0 (TCP/IP), WebDAV E-mail/I-Fax: SMTP, POP3	Power consumption	Maximum: Approx. 1,500 W Copying (with DADF continuous scan): Approx. 613 W* Standby: Approx. 40.7 W* Sleep mode: Approx. 0.8 W* * Reference value: measured one unit * 0.8 W sleep mode is not available in all circumstances due to certain settings.
File Format	Standard: TIFF, JPEG, PDF(Compact, Searchable, Apply policy, Optimize for Web, PDF/A-1b, Trace & Smooth, Encrypted, Device Signature, User Signature), XPS(Compact, Searchable, Device Signature, User Signature), Office Open XML (PowerPoint, Word)		Typical Electricity Consumption (TEC)* : IR-ADV DX C3835i: 0.40 kWh IR-ADV DX C3830i: 0.32 kWh IR-ADV DX C3826i: 0.28 kWh IR-ADV DX C3822i: 0.25 kWh *As per USA Energy Star 3.0
Universal Send Features	Original Type Selection, Two-sided Original, Book to Two Pages, Different-size Originals, Density Adjustment, Sharpness, Copy Ratio, Erase Frame, Job Build, Delayed Send, Preview, Job Done Notice, File Name, Subject/Message, Reply-to, E-mail Priority, TX Report, Original Content Orientation, Skip Blank Originals	Noise levels	Sound Power Level (L_{WA}m) Active (BW)(1-sided) IR-ADV DX C3835i: 61 dB, Kv 3 dB IR-ADV DX C3830i: 60 dB, Kv 3 dB IR-ADV DX C3826i: 60 dB, Kv 3 dB IR-ADV DX C3822i: 60 dB, Kv 3 dB *Reference value: measured only one unit with ISO7779, described with ISO9296 (2017) Sound Pressure (L_{pA}m) Bystander's position: Active(BW/CL)(1-sided): IR-ADV DX C3835i: 47 dB*/ 48 dB* IR-ADV DX C3830i: 46 dB*/ 47 dB* IR-ADV DX C3826i: 46 dB*/ 47 dB* IR-ADV DX C3822i: 46 dB*/ 46 dB* *Reference value: measured only one unit with ISO7779, described with ISO9296 (2017)
FAX SPECIFICATIONS			Blue Angel
Maximum Number of Connection Lines	2		
Modem Speed	Super G3: 33.6 kbps G3: 14.4 kbps		
Compression Method	MH, MR, MMR, JBIG		
Resolution (dpi)	400 x 400 (Ultra Fine), 200 x 400 (Super Fine), 200 x 200 (Fine), 200 x 100 (Normal)		
Sending and Receiving Size	Sending: A3, A4, A4R, A5*, A5R*, B4, B5*, B5R* Receiving: A3, B4, A4, A4R, A5R, B5, B5R *1 Sent as A4 *2 Sent as B4 short		
FAX memory	Up to 30,000 pages (2,000 jobs)		
Speed dials	Max. 200		
Group dials/destinations	Max. 199 dials		
Sequential broadcast	Max. 256 addresses		
Memory backup	Yes		
Fax Features	Sender's Name (TTI), Selecting the Telephone Line (when sending fax), Direct Send, Delayed Send, Preview, Job Done Notice, TX Report, Interrupt Transmission, Sequential Broadcasting, Password/Subaddress Sending, Confidential Mailbox, 2 on 1 Log		
STORE SPECIFICATIONS		Standards	
Box (Number supported)	100 User Inboxes, 1 Memory RX Inbox, 50 Confidential Fax Inboxes Maximum 10,000 Pages (2,000 jobs) Stored	CONSUMABLES	
Advanced Space	Communication Protocol: SMB or WebDAV Supported Client PC: Windows* 8.1/10 Concurrent Connections (Max.): SMB:64, WebDAV:3	Toner Cartridges	C-EXV 49 Toner BK/C/M/Y
Advanced Space available disc space	Standard:16 GB (With option: max. 480GB)	Toner Yield (Estimated @5% Coverage)	C-EXV 49 Toner BK: 36,000 pages C-EXV 49 Toner C/M/Y: 19,000 pages
Advanced Space Features:	Authentication for Advanced Space Log-in, Sort Function, Printing a PDF File with a Password, imageWARE Secure Audit Manager Support, Search, File Preview, Authentication Management, Open to public, URI TX, Backup/Restore	SOFTWARE AND PRINTER MANAGEMENT	
SECURITY SPECIFICATIONS		Tracking and reporting	Universal Login Manager (ULM) uniFLOW Online Express* *For more information, please refer to: uniFLOW Online Express uniFLOW Online
Authentication and Access Control	User Authentication (Picture Login, Picture and PIN Login, Card Login*, Username and Password Login, Function Level Login, Mobile Login), Department ID Authentication (Department ID and PIN Login, Function Level Login), uniFLOW Online Express (PIN Login, Picture Login, Picture and PIN Login, Card Login, Card and PIN Login, Username and Password Login, Department ID and PIN Login, Function Level Login), Access Management System (Access Control) *Card readers are optional, please refer to Hardware Accessories Activation is required	Remote management tools	iWEMC eMaintenance Content Delivery System
		Scanning software	Color Network ScanGear 2
		Optimisation tools	Canon Driver Configuration Tool
		Platform	MEAP (Multifunctional Embedded Application Platform)
		Document Publishing	Kofax Power PDF Advanced (optional)

TECHNICAL SPECIFICATIONS

imageRUNNER ADVANCE DX C3800 Series

PAPER SUPPLY OPTIONS

Cassette Feeding Unit-AW1

Paper Capacity: 550 sheets x 2 (1,100 sheets) (80 gsm)
Paper Type: Thin, Plain, Recycled, Color, Heavy, Bond, Transparency, Pre-punched, Letterhead
Paper Size: A3, A4, A4R, A5, A5R, A6R, B4, B5, B5R, Custom Size: 105.0 x 148.0 mm to 304.8 x 457.2 mm
Paper Weight: 52 to 256 gsm
Power Source: From the Main Unit
Dimensions (W x D x H): 565 x 635 x 248 mm
Weight: Approx. 16.0 kg

OUTPUT OPTIONS*

Inner 2way Tray-M1

*Paper capacity may vary with different paper type/size.

Tray Capacity (with 80 gsm paper)
Upper tray: A4, A5, A5R, A6R, B5, B5R: 85 sheets
SRA3, A3, A4R, B4: 40 sheets
Lower tray (standard tray): A4, A5, A5R, A6R, B5, B5R: up to 220 sheets
SRA3, A3, A4R, B4: up to 100 sheets
Paper Weight: 52 to 300 gsm
Dimensions (W x D x H): 428 x 405 x 88 mm
Weight: 0.7 kg

Copy Tray-T1

Capacity (with 80gsm paper):
A4, A5R, B5, B5R: 100 sheets
A3, A4R, B4: 65 sheets
Dimensions (W x D x H): 442 x 373 x 176 mm (attached to the main unit, when the extension tray is extended)
Weight: 0.5 kg

Inner Finisher-L1

Tray Capacity (with 80gsm paper):
Upper Tray: SRA3, A3, A4, A4R, A5, A5R, A6R, B4, B5, B5R: approx. 45 sheets
Lower Tray: A4, A5, A5R, B5: approx. 500 sheets
SRA3, A3, A4R, B4, B5R: 250 sheets

A6R: 30 sheets
Envelope: 10 sheets
Paper Weight: 52 to 300 gsm
Staple Position: Corner, Double
Staple Capacity:
A4, B5: 50 sheets (52 to 90 gsm)
A4R: 40 sheets (52 to 90 gsm)
A3, B4: 30 sheets (52 to 90 gsm)
Eco Staple:

A3, A4, B4, B5: 10 sheets (52 to 64 gsm)
8 sheets (65 to 81.4 gsm)
6 sheets (82 to 105 gsm)

Staple On Demand: approx. 40 sheets (80 gsm)
Dimensions (W x D x H): 727 x 525 x 225 mm (attached to the main unit, when the extension tray is extended)
Weight: Approx. 9.1 kg

Staple Finisher-AE1

Tray Capacity (with 80gsm paper):
Upper Tray: A4, A5, A5R, A6R, B5: approx. 250 sheets
SRA3, A3, A4R, B4, B5R: approx. 125 sheets

Lower Tray: A4, A5, A5R, B5: 3,000 sheets
SRA3, A3, A4R, B4, B5R: 1,500 sheets

A6R: 250 sheets
Envelope: Monarch 30 sheets, COM10 No.10, DL, ISO-C5: 100 sheets
Paper Weight:
Upper Tray: 52 to 256 gsm
Lower Tray: 52 to 300 gsm
Staple Position: Corner, Double
Staple Capacity: A4, B5: 50 sheets (52 to 90 gsm)
A4R: 40 sheets (52 to 90 gsm)
A3, B4: 30 sheets (52 to 90 gsm)

Eco Staple:
A3, A4: 10 sheets (52 to 64 gsm)
8 sheets (65 to 81.4 gsm)
6 sheets (82 to 105 gsm)
Staple On Demand: 50 sheets (52 to 90 gsm)
Dimensions (W x D x H): 637 x 623 x 1,021 mm (when the extension tray is extended)
Weight: Approx. 30.0 kg

Booklet Finisher-AE1

(Includes the above Staple Finisher-AE1 basic staple specifications.)
Saddle Stitch paper size: A3, A4R, B4
Saddle Stitch Staple Capacity: 20 sheets x 10 sets (52 to 81.4 gsm) (including 1 cover sheet up to 256 gsm)
Non Staple Folded Bunch Capacity: up to 3 sheets (52 to 105 gsm)
Power supply: From main unit
Dimensions (W x D x H): 637 x 623 x 1,021 mm (when the extension tray is extended)
Weight: Approx. 53.0 kg

Inner 2/4 Hole Puncher-D1

(Requires Inner Finisher-L1)

Two or Four Holes
Acceptable Punch Paper Weight: 52 to 300 gsm
Acceptable Punch Paper Size:
Two holes A3, A4, A4R, A5, B4, B5, B5R,
Four holes A3, A4

Inner 4 Hole Puncher-D1

(Requires Inner Finisher-L1)

Four Holes
Acceptable Punch Paper Weight: 52 to 300 gsm
Acceptable Punch Paper Size:
Four holes A3, A4, A4R, A5, B4, B5, B5R

2/4 Hole Puncher Unit-A1

(Requires either the Staple Finisher-AE1 or Booklet Finisher-AE1)

Two or Four Holes
Acceptable Punch Paper Weight: 52 to 300 gsm
Acceptable Punch Paper Size:
Two holes A3, A4, A4R, A5, B4, B5, B5R,
Four holes A3, A4

4 Hole Puncher Unit-A1

(Requires either the Staple Finisher-AE1 or Booklet Finisher-AE1)

Four Holes
Acceptable Punch Paper Weight: 52 to 300 gsm
Acceptable Punch Paper Size:
Four holes A3, A4, A4R, A5, B4, B5, B5R

HARDWARE ACCESSORIES

Card Readers

Copy Card Reader-F1
Copy Card Reader Attachment-B7
IC Card Reader Box for Numeric Keypad-A1

Others

Single Pass DADF-C1
DADF-BA1
Platen Cover-Y3
Utility Tray-B1
Numeric Keypad-A2
Instant Stapler-B1 (optional)
Media Adjustment Kit-A1

SECURITY OPTIONS

Data Security

1TB SSD-A1
Memory Mirroring Kit-A1
250GB SSD-A1 (usage with Memory Mirroring Kit-A1)

SYSTEM AND CONTROLLER OPTIONS

Print Accessories

PCL International Font Set-A

Barcode Printing

Barcode Printing Kit-D1

System Accessories

Copy Control Interface Kit-A1
Serial Interface Kit-K3
Connection Kit-A3 for Bluetooth LE
NFC Kit-E2

Fax Accessories

Super G3 FAX Board-BH1
Super G3 2nd Line Fax Board-BH1
Remote Fax Kit-A1
IP FAX Expansion Kit-B1

OTHER OPTIONS

Accessibility Accessories

ADF Access Handle-A1
Voice Guidance Kit-G1
Voice Operation Kit-D1

Staple Cartridges

Staple Cartridge-Y1 (2 x 2,000pcs)*
* For Booklet Finisher only
Staple-P1 (2 x 5,000pcs)

Device Protection

Antimicrobial Film* - Various Sheets designed to fit the devices most common touch points.
*Application by a Service engineer is recommended

Software & Solutions



Certifications and compatibility



Canon Ireland
3006 Lake Drive
Citywest, Saggart
Co. Dublin, Ireland
Telephone No: 01 2052400
Facsimile No: 01 2052525
canon.ie

Canon (UK) Ltd
5 The Square
Stockley Park
Uxbridge
UB11 1ET
Tel: 01895 648 000
www.canon.co.uk

Canon Inc.
canon.com
Canon Europe
canon-europe.com
English edition
© Canon Europa N.V., 2021